

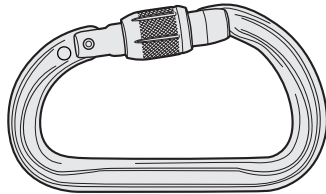


www.gmesupply.com  
(800) 940-6762  
info@gmesupply.com

# CARABINER GATE MECHANISMS

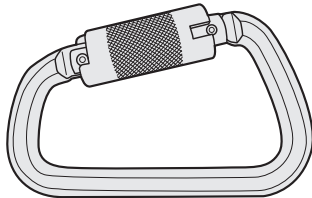
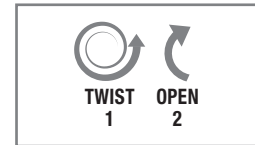
Carabiner gates come in a few different varieties. For tower climbing, the most common is the twist lock, but some other work may require another variety of gate function.

FREE  
DOWNLOAD



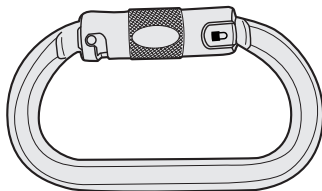
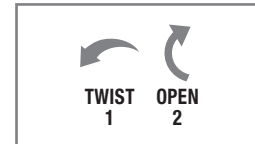
## SCREW-LOCK

The screw-lock operates by unscrewing the sleeve down the gate to open. This gate will not auto-lock, as the sleeve has to be manually tightened after the gate snaps shut.



## TWIST-LOCK

The twist-lock is a double action gate that quickly opens with a simple twist and pull movement.



## AUTO-LOCK

This is a three stage design as it requires 3 different motions to open. First you pull the sleeve down, then twist, then pull back to open. Some carabiners only twist one direction, while others can twist left or right.

