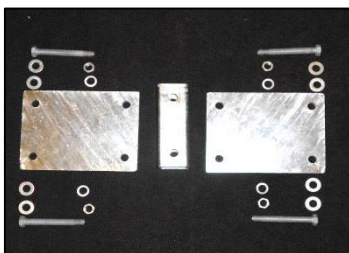


CABLE SAFE CLIMB SYSTEM HEAD EXTENSION KIT FOR 115-144 CHANNEL WELDMENTS ATTACHMENT

115-345-Channel Mount Kit TUF-TUG Head Extension Kit



Includes:

- (2) 115-345-DB Monopole head extension plates
- (4) 115-115AT 1/2" x 5" Hx Hd bolts
- (8) 115-410G 1/2" washers
- (4) 110-153 1/2" HDG Hex nuts
- (4) 110-159 1/2" HDG lockwashers
- (1) 115-..3 2"x2" HDG square tube

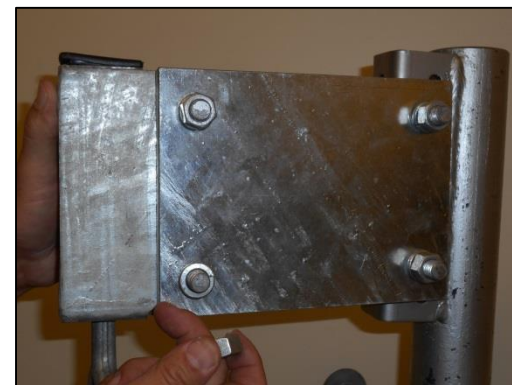
A) Attach assembly to channel weldment with (2) each washers on either side



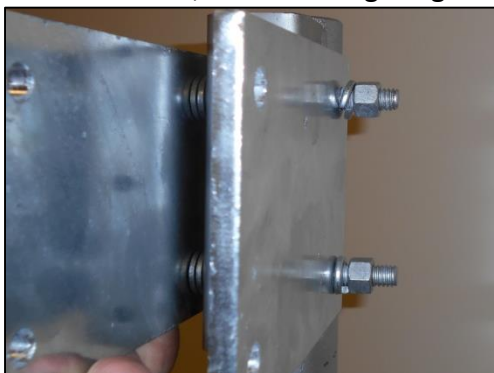
C) Install tube reinforcement in head assembly



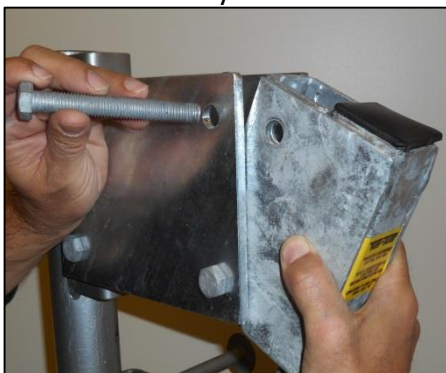
E) Attach nuts and torque to 45 ft.lb.



B) Finish connection with nuts and lock washers, attached finger tight



D) Insert 1/2" bolts through both sides of assembly



F) Completed installation

