

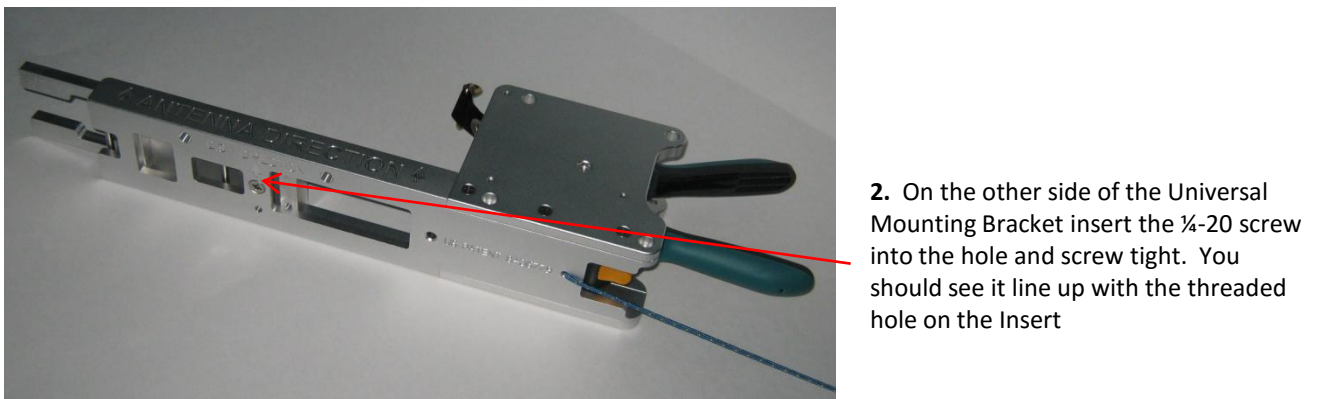
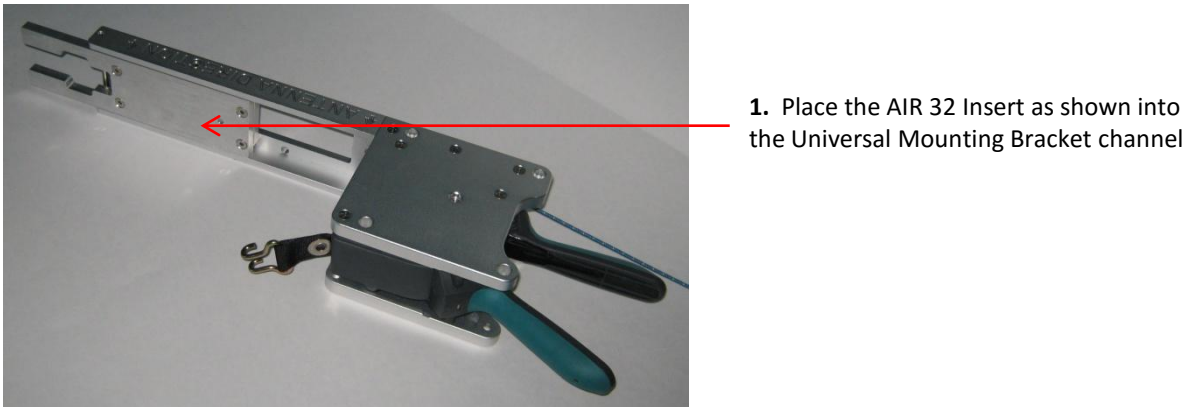
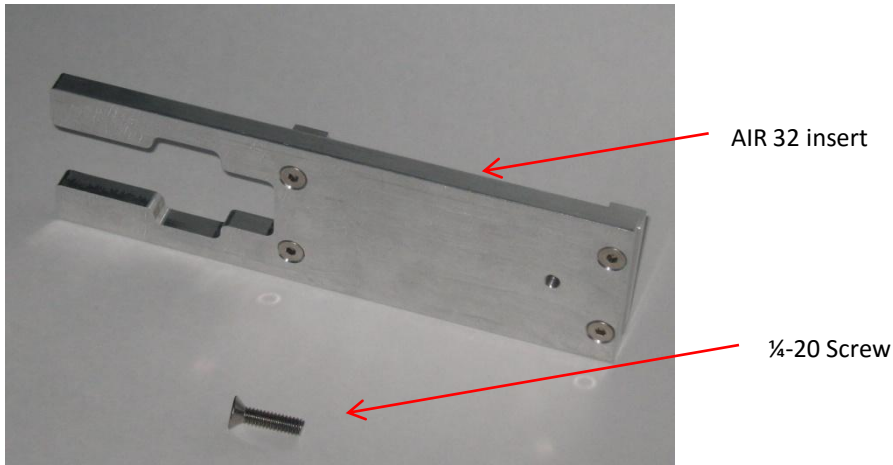
Using the Smart Aligner with an Ericsson AIR 32 Antenna

NOTE: It is assumed that the user is already familiar with how the Smart Aligner System (Smart Aligner Tool, Universal Mounting Bracket and App) operates and mounts to standard antennas. If not please follow instructions for operation of the Smart Aligner System by watching our videos and reading the User Guide and other information at:

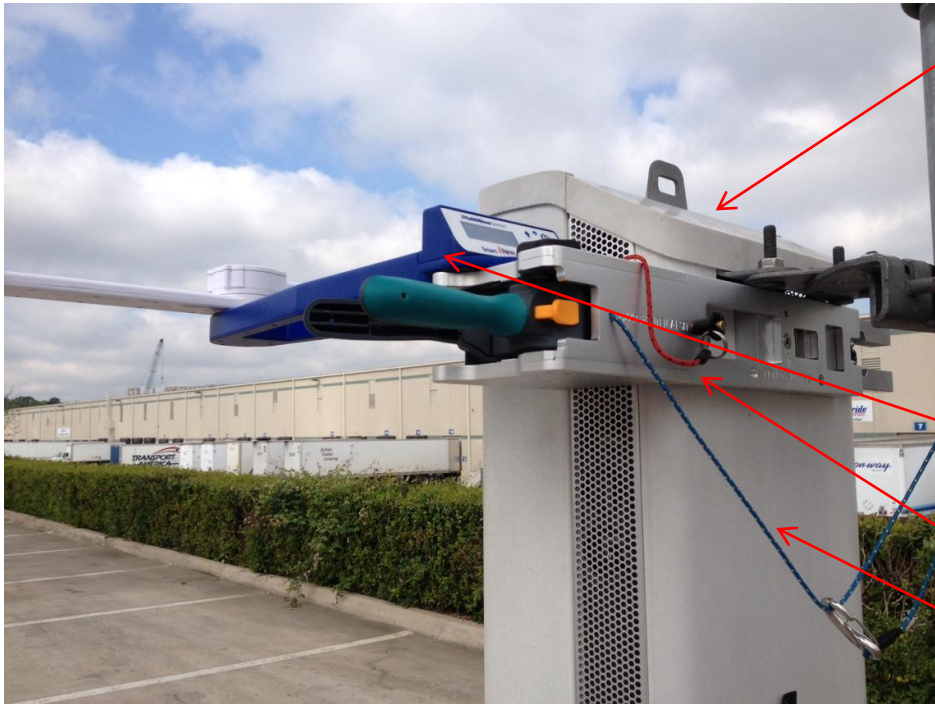
<http://www.mutiwavesensors.com/antenna-alignment/>

Since the Ericsson AIR 32 Antenna backplane is longer than the Universal Mounting Bracket channel an insert is required to extend the Bracket backplane.

STEP 1: Attach the AIR 32 Insert into the Universal Mounting Bracket



STEP 2: Attach the Smart Aligner System to the AIR 32 Antenna as you would to any standard antenna.

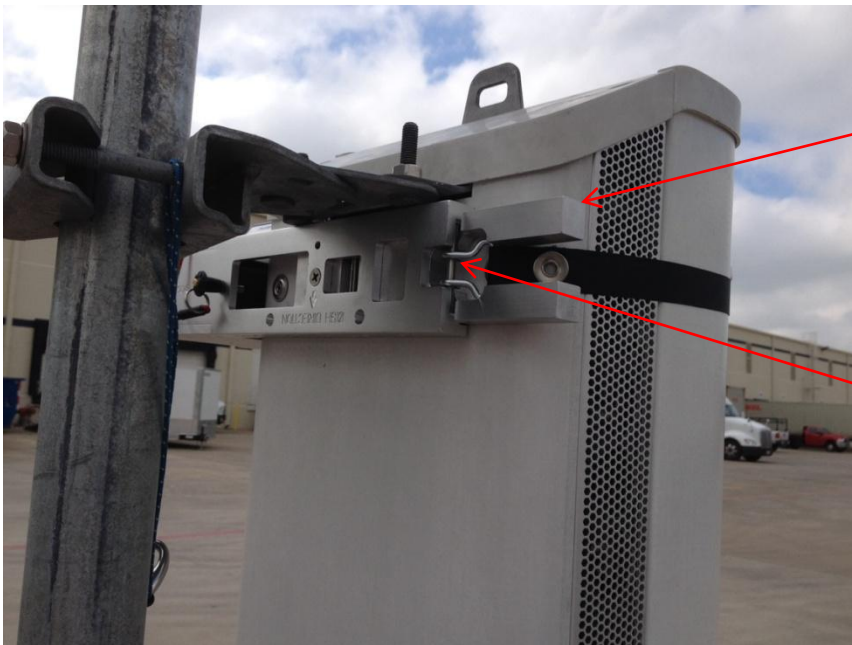


AIR 32 Antenna

Smart Aligner Tool

Tool Red Tether Line

Bracket Blue Tether Line



The Insert extends to the end of the AIR 32 antenna backplane

Strap Hook to Fastening Pin on Bracket