

**3M** Science.  
Applied to Life.™



# LAD-SAF™ X3

3/8" (9.5mm) Detachable Cable Sleeve

Superior Climbing  
Performance on 3/8" Cable



now proudly  
part of 3M:



# LAD-SAF™ X3

## 3/8" (9.5mm) Detachable Cable Sleeve\*

The Lad-Saf X3 3/8" (9.5mm) Detachable Cable Sleeve is part of a permanently installed ladder safety system. It is designed to work with many different styles and lengths of ladders on structures like wind turbines, communication towers, buildings, water towers and more.

### What's New

#### Inertial Cam Design

A redesign of the cam allows for better climbing performance on 3/8" (9.5mm) cable while ensuring full compliance with all current standards

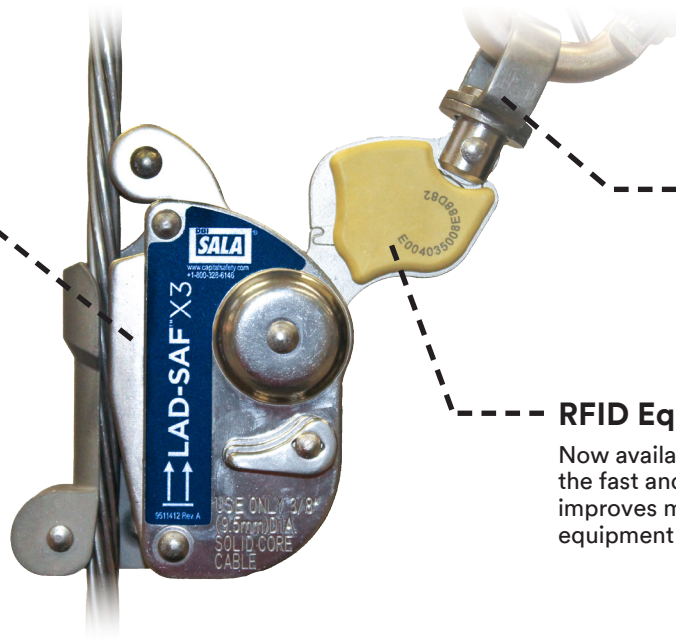
#### Swivel End

A more maneuverable swivel provides user with increased mobility while climbing.

#### RFID Equipped

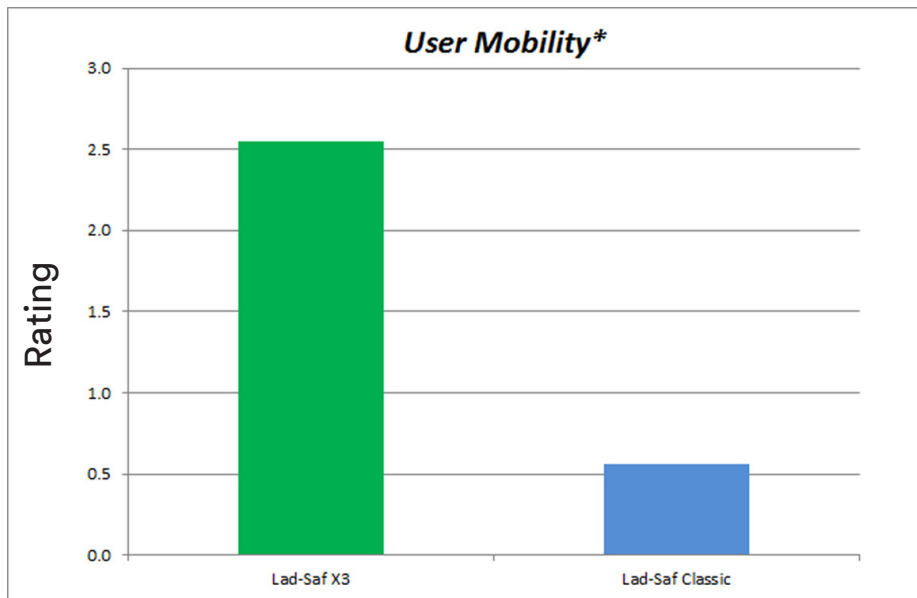
Now available on the Lad-Saf X3 Sleeve, the fast and easy scanning of RFID tag improves management of the safety equipment inspection process.

\* Not Intended for use on 5/16" (8mm) cable



Lad-Saf X3 3/8" (9.5mm) Detachable Cable Sleeve | 6160054

## LAD-SAF X3 Optimizes User Mobility While Assuring Full Compliance With All Existing Standards



\* The User Mobility data was determined based on each sleeve's performance during several internally developed tests. All testing was performed on 3/8" (9.5mm) 1x7 cable. For more information on the specific tests performed, please contact Customer Service.



# Features and Benefits

## Easy to Climb

The Lad-Saf X3 3/8" (9.5mm) Detachable Cable Sleeve is a portable connection device that connects the worker's harness to the ladder cable and glides freely up and down the cable as the worker climbs. Once attached, the sleeve does not require any further handling by the climber and allows the climber to move up and down the entire length of the ladder safety system with ease and confidence.

## Easy to Install and Detach

The Lad-Saf X3 is designed for one-handed attachment and detachment anywhere along the cable.

## Primary and Secondary Locking System

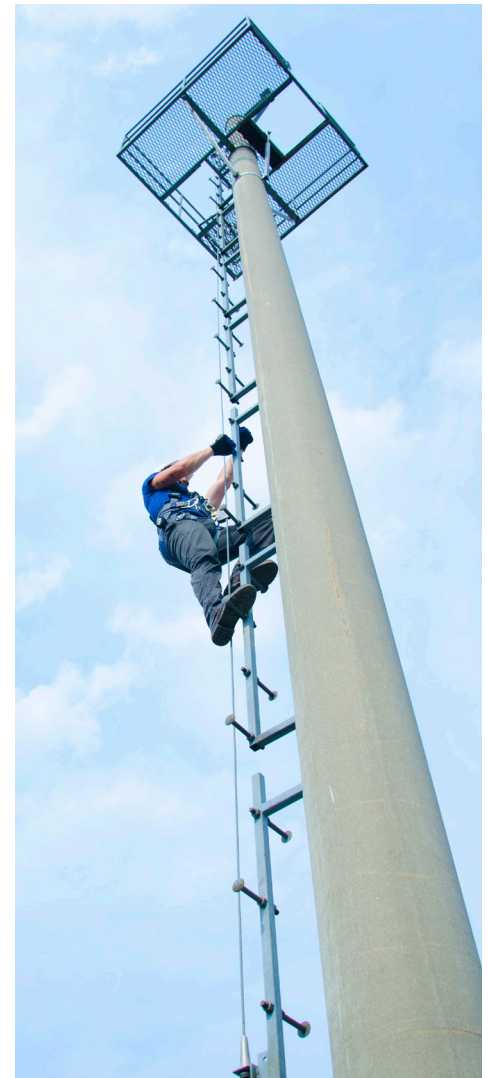
In the event of a fall, the sleeve is designed to lock onto the cable and arrest the fall, and to remain locked until the worker can regain his footing or be rescued. Even if something interferes with the primary mechanical locking system, a secondary inertial locking system will engage.

## Integrated Energy Absorber/Fall Indicator

The integrated energy absorber reduces the maximum fall arrest force. In the event of a fall this absorber also acts as a fall indicator, showing the device has been deployed and needs to be taken out of service.

## Compact and Corrosion Resistant

The Lad-Saf X3's compact and lightweight design has stainless steel construction to stand up to harsh environments.



## General Specifications:

- For use with 3/8" (9.5 mm) diameter 1×7 and 7×19 solid core cable ONLY\*
- Capacity = 1 user of 310 lbs. (140.6 kg)
- Mechanical and inertial locking system
- Size = 5 inches (12.7 cm) x 6 inches (15.24 cm)
- Weight = 2.5 lbs. (1.13 kg)

## Materials and Construction

- Body: Heat Treated Stainless Steel
- Rivets: Stainless Steel
- Locking Cam: Heat Treated Stainless Steel
- Springs: Stainless Steel
- Side Plates and Ext. Pieces: Stainless Steel
- Construction: Riveted Assembly



Lad-Saf X3 3/8" (9.5mm) Detachable Cable Sleeve | 6160054

\* Not Intended for use on 5/16" (8mm) cable



**3M Fall Protection Business  
Capital Safety**

USA: 800-328-6146  
Canada: 800-387-7484  
Web: [www.capitalsafety.com](http://www.capitalsafety.com)  
Email: [info@capitalsafety.com](mailto:info@capitalsafety.com)

*now proudly  
part of 3M:*

