

FULL BODY HARNESS SIZING CHART

FallTech understands the importance of a good fitting harness. That's why we spent years collecting and quantifying data related to the ergonomics of the human body. We have implemented that into our new full body harness sizing program - perfecting the fit, form and function in our products.

Proper fit and adjustment of harness is crucial to safety.

SHOULDER STRAP

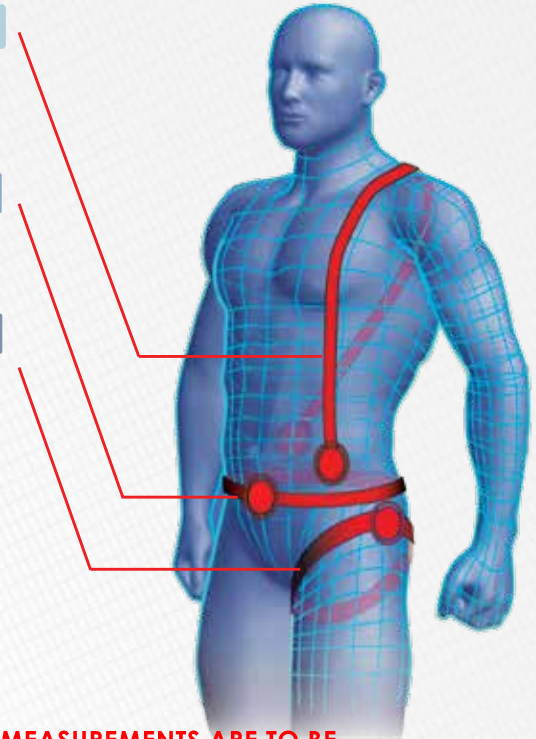
Measure from 3 inches left of navel. Upward over left shoulder towards lower right side of back.

WAIST

Measure the circumference around the waist just under the navel.

LEG STRAP

Measure the circumference around the thigh from the crotch to underneath the hip bone.



MEASUREMENTS ARE TO BE TAKEN OVER CLOTHING AND BELT.

SHOULDER STRAP		LEG STRAP	
SINGLE SIZED HARNESS FIT RANGE			
XS	32"-49"	TB 16" - 28"	MB/QC 14" - 30"
S	38"-51"	TB 18" - 30"	MB/QC 16" - 32"
M	40"-53"	TB 20" - 32"	MB/QC 18" - 34"
L	42"-55"	TB 22" - 34"	MB/QC 20" - 36"
XL	46"-57"	TB 24" - 36"	MB/QC 22" - 38"
2X	48"-60"	TB 26" - 38"	MB/QC 24" - 40"
3X	51"-62"	TB 28" - 40"	MB/QC 26" - 42"
4X	50"-64"	TB 30" - 42"	MB/QC 28" - 44"

TB = Tongue Buckle
MB = Mating Buckle
QC = Quick Connect Buckle

UNIVERSAL (S, M & L) SIZED HARNESS FIT RANGE	
UNI	47"-60"

DUAL SIZED HARNESS FIT RANGE	
S/M	43"-53"
L/XL	45"-58"
XL/2X	49"-68"
2X/3X	51"-63"
3X/4X	52"-64"

*On tongue buckle legs * with 7 grommets we offer 2" spacing.
* with 9 grommets we offer 1.5" spacing.
* we are advising the use of the 5 central grommets.

WAIST

9 GROMMET BELT

XS	28"-41"
S	32"-45"
M	36"-49"
L	40"-53"
XL	44"-57"
2X	48"-61"
3X	52"-65"
4X	56"-69"

9 GROMMET BELT DUAL SIZE

S/M	34"-47"
L/XL	42"-55"
XL/2X	46"-59"
2X/3X	50"-66"
3X/4X	54"-70"

7 GROMMET BELT

XS	30"-39"
S	34"-43"
M	38"-47"
L	42"-51"
XL	46"-55"
2X	50"-59"
3X	54"-63"
4X	58"-67"

7 GROMMET BELT DUAL SIZE

S/M	36"-45"
L/XL	44"-53"
XL/2X	48"-57"
2X/3X	52"-61"
3X/4X	56"-65"